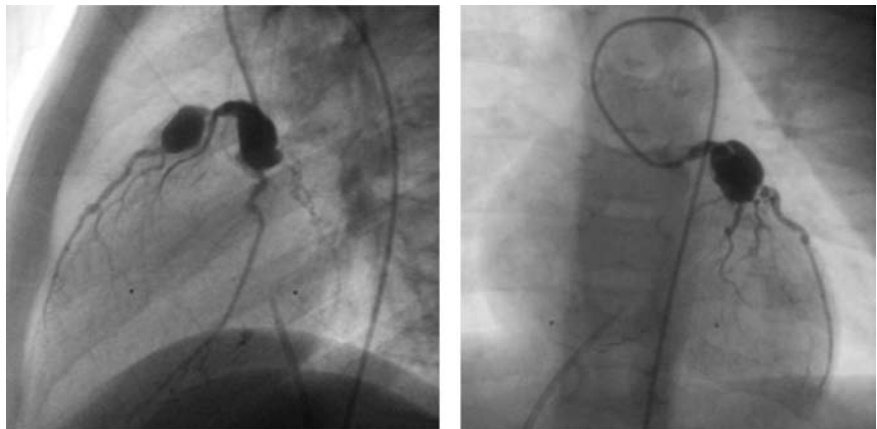


## Bilateral Coronary Aneurysms in Kawasaki Disease

Spyridon Rammos, MD

*Department of Pediatric Cardiology,  
Onassis Cardiac Surgery Center,  
Athens, Greece*

**Kawasaki disease**,<sup>1-6</sup> more commonly encountered in Asia, often affects coronary vessels and leads to coronary aneurysms. Coronary aneurysms or ectasia occur almost in half of the patients afflicted by the disease. Patients with significant ectatic or aneurysmal involvement of the coronary vessels are at risk for sudden cardiac death during the 3<sup>rd</sup>-4<sup>th</sup> week after the onset of the disease (1-2%). Coronary aneurysms are detectable in 15-20% at 3 months after the disease and in 8% at 3 years later. In a large angiographic study in patients with Kawasaki disease, the authors described coronary aneurysms, stenoses and/or occlusion at 2 years in 25% of patients.<sup>5</sup> Use of immunoglobulin during the acute phase of the disease significantly reduces the occurrence of aneurysm (5-8%), particularly of the giant aneurysms (1%) and improves the prognosis in these patients.<sup>1-3</sup>



**FIGURE 1.** Aneurysmal dilation of the proximal segments of both the right and left coronary arteries in a patient with Kawasaki disease.

### REFERENCES

1. Newburger JW, Takahashi M, Gerber MA, et al; Committee on Rheumatic Fever, Endocarditis and Kawasaki Disease; Council on Cardiovascular Disease in the Young; American Heart Association; American Academy of Pediatrics. Diagnosis, treatment, and long-term management of Kawasaki disease: a statement for health professionals from the Committee on Rheumatic Fever, Endocarditis and Kawasaki Disease, Council on Cardiovascular Disease in the Young, American Heart Association. *Circulation* 2004;110:2747-2771.

*Correspondence to:*  
Dr med. habil. Dr Spyridon Rammos  
Director of Pediatric Cardiology  
Onassis Cardiac Surgery Center  
Athens, Greece  
E-mail: rammos@gmx.net

## BILATERAL CORONARY ANEURYSMS IN KAWASAKI DISEASE

2. Japanese Circulation Society Joint Research Group. Guidelines for diagnosis and management of cardiovascular sequelae in Kawasaki disease. *Pediatr Int* 2005;47:711-732
3. [Satou GM](#), [Giamelli J](#), [Gewitz MH](#). Kawasaki disease: diagnosis, management, and long-term implications. *Cardiol Rev* 2007;15:163-169.
4. Suzuki A, Takemura A, Inaba R, Sonobe T, Tsuchiya K, Korenaga T. Magnetic resonance coronary angiography to evaluate coronary arterial lesions in patients with Kawasaki disease. *Cardiol Young* 2006;16:563-571.
5. Kato H, Sugimura T, Akagi T, et al. Long-term consequences of Kawasaki disease. A 10- to 21-year follow-up study of 594 patients. *Circulation* 1996;94:1379-1385.
6. Gong F, Shiraishi H, Momoi MY. Follow-up of coronary artery lesions caused by Kawasaki disease and the value of coronary angiography. *Chin Med J (Engl)* 2002;115:681-684.